



Apartment in La Marina - New build

LA MARINA

330,000€

ID # N9384



120m²



3



3



- Swimming pool: Communal
- Close To Schools
- Lift
- Furnished
- Pre-installed air conditioning

Lexington Realty

C/ Finlandia 19, Bl. 1, Loc. 2
Commercial Centre Gran Alacant
03130 Santa Pola, ALICANTE

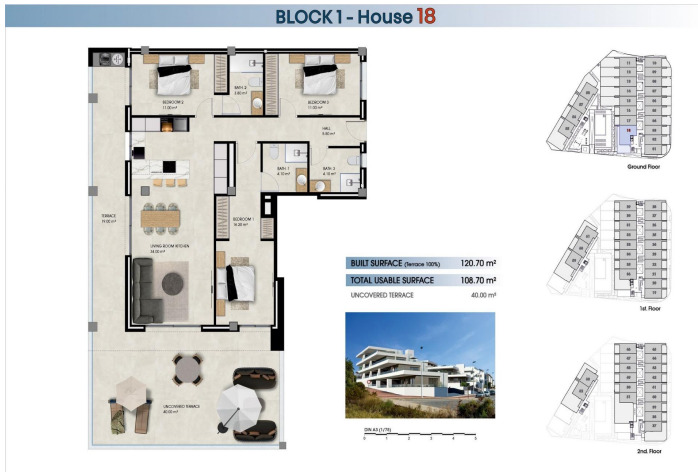
Contact us

W: www.lexington-realty.com
T: +34 966 69 51 52
M: contact@lexington-realty.com





BLOCK 1 - House 18



Lexington Realty

C/ Finlandia 19, Bl. 1, Loc. 2
 Commercial Centre Gran Alacant
 03130 Santa Pola, ALICANTE

Contact us

W: www.lexington-realty.com
 T: +34 966 69 51 52
 M: contact@lexington-realty.com



Description

Modern New Build Residences Just 800 m from El Pinet Beach – Exclusive Residential Complex in La Marina – Elche – Discover this modern residential complex of 64 new build properties located in El Pinet, one of the most sought after coastal areas between La Marina and Elche. Just 800 m from the fine sandy beach of El Pinet, the development offers the perfect balance between Mediterranean lifestyle, nature and everyday convenience. The area is surrounded by protected dunes, pine forests and the famous Salinas de Santa Pola, creating a peaceful and natural environment ideal for year round living. – Homes With 2 or 3 Bedrooms and Multiple Layout Options – Choose from a variety of property types to suit your lifestyle. Options include ground floor homes with private gardens, middle floor apartments with spacious terraces or penthouses with private terraces and solarium. All units have been designed with modern lines, functional layouts and abundant natural light. – High Quality Finishes and Ready to Move In – Every home comes fully equipped and furnished, offering exceptional value and comfort. – Features include: – Kitchens fully equipped with appliances – Interior and exterior lighting included – Preinstallation for ducted air conditioning – Electric shutters – Bathrooms with furniture, mirrors and shower screens – Underground parking space and storage room – Attractive Communal Areas for Relaxation and Leisure – The complex offers a range of amenities designed to enhance your lifestyle. Enjoy a large communal swimming pool, children's play area and beautifully landscaped gardens. These spaces provide the perfect setting for relaxation, socialising and outdoor enjoyment under the Costa Blanca sun. – Prime Coastal Location Close to All Services – Living in La Marina means enjoying excellent accessibility, natural surroundings and all essential services within easy reach. Shops, restaurants, supermarkets and leisure facilities are just a short walk away, while nearby towns offer even more amenities. – Distances to Key Points of Interest – Playa de El Pinet 800 m – City of Elche 17 km – Alicante Elche International Airport 22 km – Golf courses La Marquesa and El Plantío 15 to 20 km – City and port of Alicante 30 km – Your Ideal Mediterranean Lifestyle Awaits – Whether you are looking for a permanent home, a holiday residence or a smart investment, these new build homes in El Pinet offer an unbeatable combination of location, comfort and quality. Contact us today to arrange a visit and secure your dream property by the Mediterranean Sea. –

Location

La Marina, Costa Blanca South, Alicante

La Marina

La Marina is a small coastal village which enjoys a typical Mediterranean climate, with cool sea breezes in summer and protection by surrounding mountains against the cold north winds in winter. The area averages nearly 3,000 hours of sunshine each year. La Marina is basically split into two distinct parts, the old coastal town and beach area with urbanisation La Marina.

The coastal part of the town has some fantastic sandy beaches, which even in the peak season are so big that...





Lexington Realty

C/ Finlandia 19, Bl. 1, Loc. 2
Commercial Centre Gran Alacant
03130 Santa Pola, ALICANTE

Contact us

W: www.lexington-realty.com
T: +34 966 69 51 52
M: contact@lexington-realty.com

