



Apartment in Calpe - New build

CALPE

479,000€

ID # N7657



59m²



2



2



- Swimming pool: Communal
- Close To Schools
- Lift
- Pre-installed air conditioning

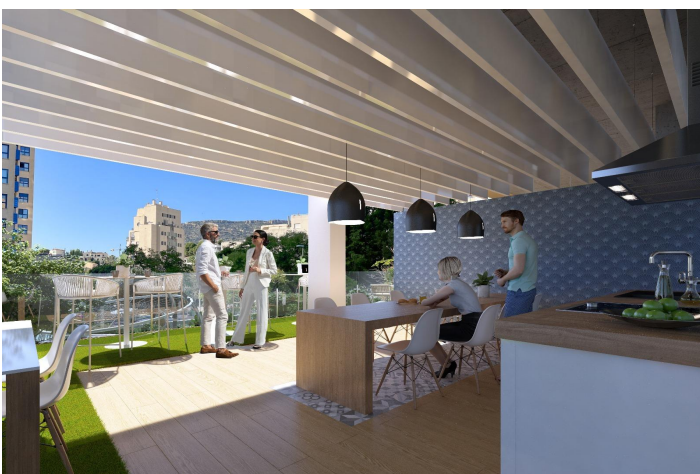
Lexington Realty

C/ Finlandia 19, Bl. 1, Loc. 2
Commercial Centre Gran Alacant
03130 Santa Pola, ALICANTE

Contact us

W: www.lexington-realty.com
T: +34 966 69 51 52
M: contact@lexington-realty.com





Lexington Realty

C/ Finlandia 19, Bl. 1, Loc. 2
Commercial Centre Gran Alacant
03130 Santa Pola, ALICANTE

Contact us

W: www.lexington-realty.com
T: +34 966 69 51 52
M: contact@lexington-realty.com



Description

NEW BUILD APARTMENTS IN CALPE New Build residential complex of apartments in Calpe. Modern apartments with 2 and 3 bedrooms, 2 bathrooms, open plan kitchen with living room, fitted wardrobes and terraces. Some of the properties have sea views. The common areas have a swimming pool for adults and children, a children's play area. Each apartment has a parking space and storage room in the basement. Calpe, one of the towns of La Marina Alta, lies on the northern coast of the province of Alicante, surrounded by the towns of Altea, Benidorm, Teulada-Moraira, Benissa. Calpe has a wonderful mixture of old Valencian culture and modern tourist facilities. It is a great base from which to explore the local area or enjoy the many local beaches. Calpe alone has three of the most beautiful sandy beaches on the coast. Calpe also has two Sailing Clubs: Real Club Náutico de Calpe and Club Náutico de Puerto Blanco. Fishing village of Calpe now transformed into a tourist magnet, the town sits in an ideal location, easily accessed by the A7 motorway and the N332 that runs from Valencia to Alicante; its approximately 1 hour drive from the airport at Alicante and 1,5 hours to Valencia's airport.

Location

Calpe, Costa Blanca North, Alicante

Calpe is a picturesque coastal town located in the province of Alicante, on the Costa Blanca in Spain. Known for its stunning beaches, iconic rock formation, and rich history, Calpe is a popular tourist destination that offers a diverse range of attractions and activities.

One of the most distinctive features of Calpe is the Peñón de Ifach, a massive rock formation that juts out into the sea. Rising to a height of 332 meters, it is the symbol of Calpe and a designated nature...



Lexington Realty

C/ Finlandia 19, Bl. 1, Loc. 2
Commercial Centre Gran Alacant
03130 Santa Pola, ALICANTE

Contact us

W: www.lexington-realty.com
T: +34 966 69 51 52
M: contact@lexington-realty.com

